



www.kings-group.net

25 Silver Street
Enfield Town EN1 3EF
Tel: 0208 364 4118

London Road, Enfield, EN2 6HP
£800,000

Kings Group - Enfield Town are pleased to offer this WELL PRESENTED 3 BEDROOM SEMI-DETACHED HOUSE which is located within close proximity of Enfield Chase and Enfield Town Overground Station which offers fast links into London Liverpool Street with connections to the Victoria Line at Seven Sisters. The property is also conveniently located for local shops and amenities. The accommodation comprises of an accommodating front lounge, dining room, spacious and extended fitted kitchen/diner, utility room, downstairs wc, lean-to, three double bedrooms, bathroom, garage and a driveway for 4/5 vehicles. In our opinion this property would make the most IDEAL FAMILY HOME. Internal viewing is recommended - call us on 0208 364 4118 to book an appointment.



Kings Group - Enfield Town are pleased to offer this WELL PRESENTED 3 BEDROOM SEMI-DETACHED HOUSE which is located within close proximity of Enfield Chase and Enfield Town Overground Station which offers fast links into London Liverpool Street with connections to the Victoria Line at Seven Sisters. The property is also conveniently located for local shops and amenities. The accommodation comprises of an accommodating front lounge, dining room, spacious and extended fitted kitchen/diner, utility room, downstairs wc, lean-to, three double bedrooms, bathroom, garage and a driveway for 4/5 vehicles. In our opinion this property would make the most IDEAL FAMILY HOME. Internal viewing is recommended - call us on 0208 364 4118 to book an appointment.

Reception One

14'7" x 14'7" (4.47 x 4.47)

With double glazed windows to the front, coved ceiling, double radiator, open style gas fireplace, phone points, TV points, power points, parquet flooring.

Reception Two / Dining Room

12'0" x 10'11" (3.68 x 3.35)

With double radiator, coved ceiling, power points, parquet flooring.

Downstairs W/C

With single glaze opaque window to the side, wash basin, low level W.C, part tiled walls, tiled flooring.

Kitchen/Diner

23'9" x 12'11" (7.26 x 3.94)

With Double glazed windows to the rear, additional 3 velux windows, 2 single radiators, tiled back splash, base and wall units with roll top, sink with drainer unit, integrated electric oven and hob, integrated extractor chimney style, space for fridge freezer, plumbing for washing machine, integrated dishwasher, power points, tiled flooring, double glazed patio door leading to back garden.

Utility Room

11'8" x 9'6" (3.56 x 2.92)

With radiator, wash basin, power points, tiled flooring, access to garden, kitchen and garage.

Upstairs Landing

With double glazed windows to the rear, loft access, power points, airing cupboard.

Bedroom One

14'2" x 11'10" (4.32 x 3.61)

With double glazed windows to the front, double radiator, built in storage cupboard, power points, coved ceiling carpeted flooring.

Bedroom Two

12'2" x 10'9" (3.71 x 3.3)

With double glazed windows to the rear, double radiator, built in storage cupboard, power points, coved ceiling, carpeted flooring.

Bedroom Three

14'6" x 9'6" (4.42 x 2.9)

With double glazed windows to the side, double radiator, coved ceiling, laminated flooring.

Bathroom

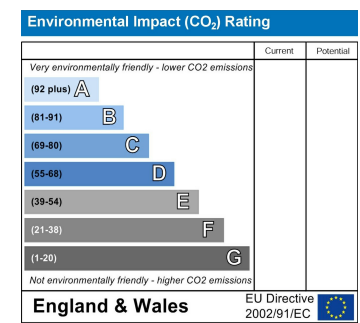
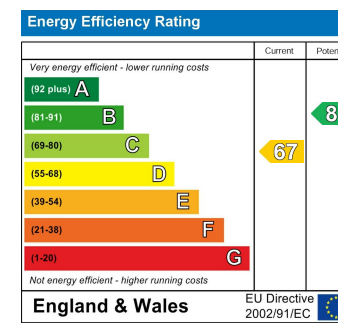
With double glazed opaque windows to the rear, heated towel rail, bath with shower attachments and enclosed panel, separate shower cubical, wash basin with mixer tap and under vanity unit, low level W.C, part tiled walls, storage cupboard, spotlights in the ceiling, laminated flooring.

Garden

With access from the side, mainly laid to lawn with shrub borders, concrete paving, wooden shed, water tap, security lights.

Garage

Single garage, power points and lighting, ample storage.



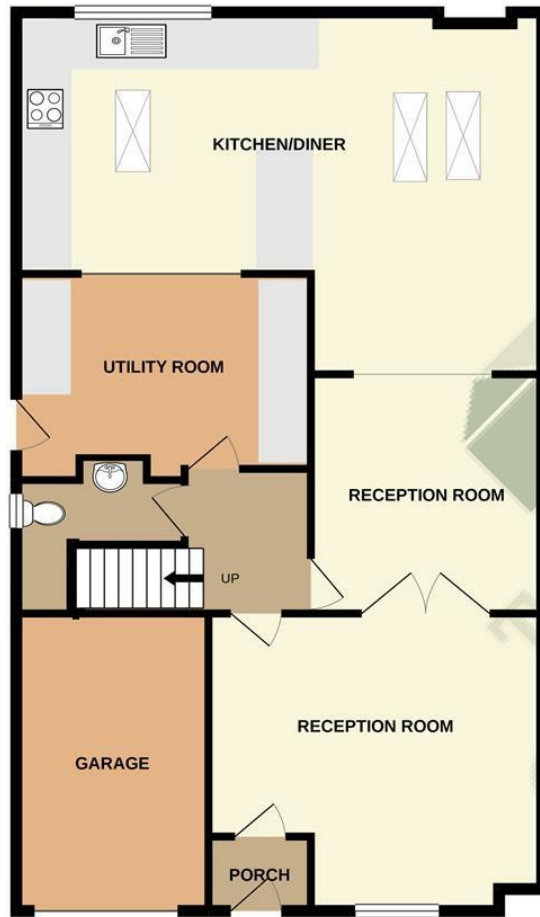


kings
GROUP

kings
GROUP



GROUND FLOOR
106.3 sq.m. (1144 sq.ft.) approx.



1ST FLOOR
61.4 sq.m. (661 sq.ft.) approx.



TOTAL FLOOR AREA : 167.7 sq.m. (1805 sq.ft.) approx.

Whilst every attempt has been made to ensure the accuracy of the floorplan contained here, measurements of doors, windows, rooms and any other items are approximate and no responsibility is taken for any error, omission or mis-statement. This plan is for illustrative purposes only and should be used as such by any prospective purchaser. The services, systems and appliances shown have not been tested and no guarantee as to their operability or efficiency can be given.
Made with Metropix ©2021



Associated Offices in London, Essex and Hertfordshire
Kings Head Office Tudor Lodge, Burton Lane, Goffs Oak, Hertfordshire EN7 6SY Tel: 01707-872000

